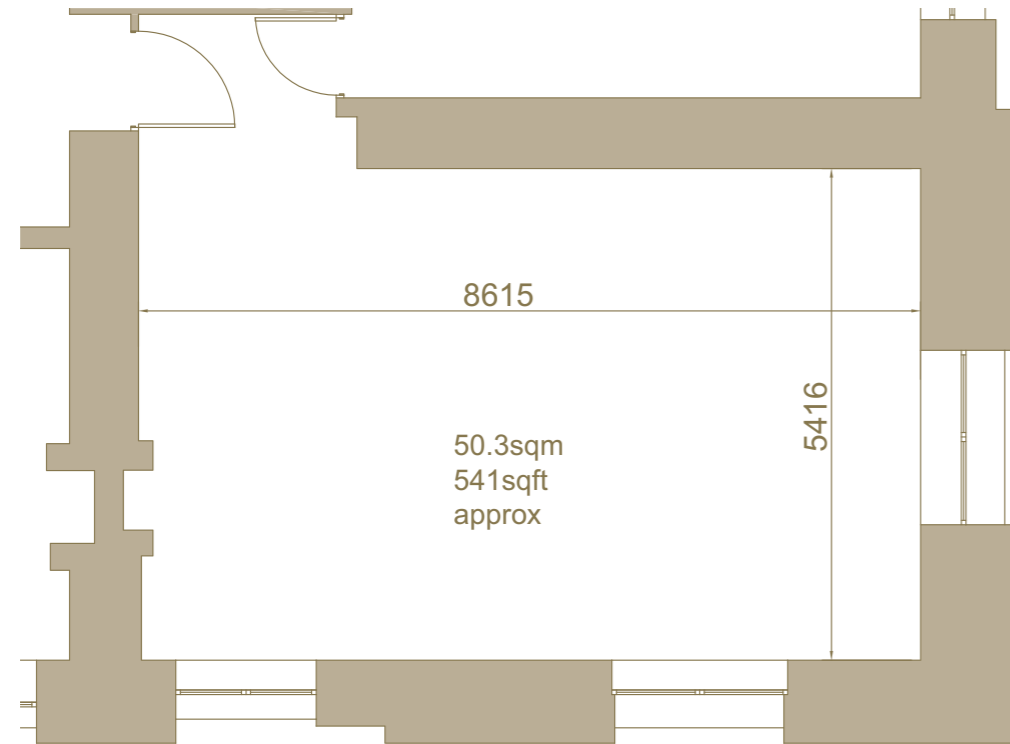


Committee room

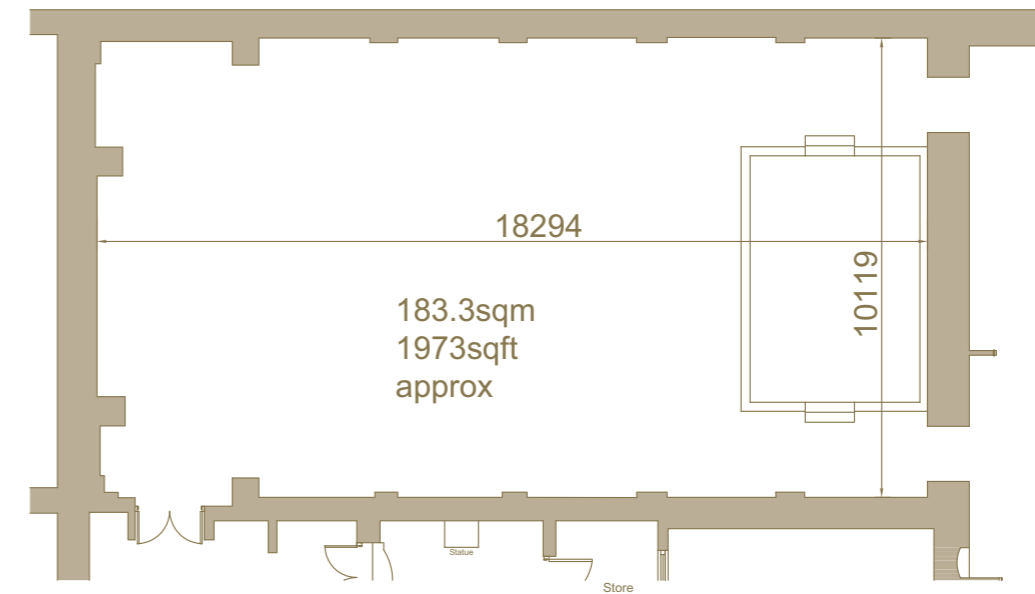
Theatre style – 50
Cabaret – 30
Drinks/canape reception – 50
Dinner – 20
Board room – 26



Room Layouts

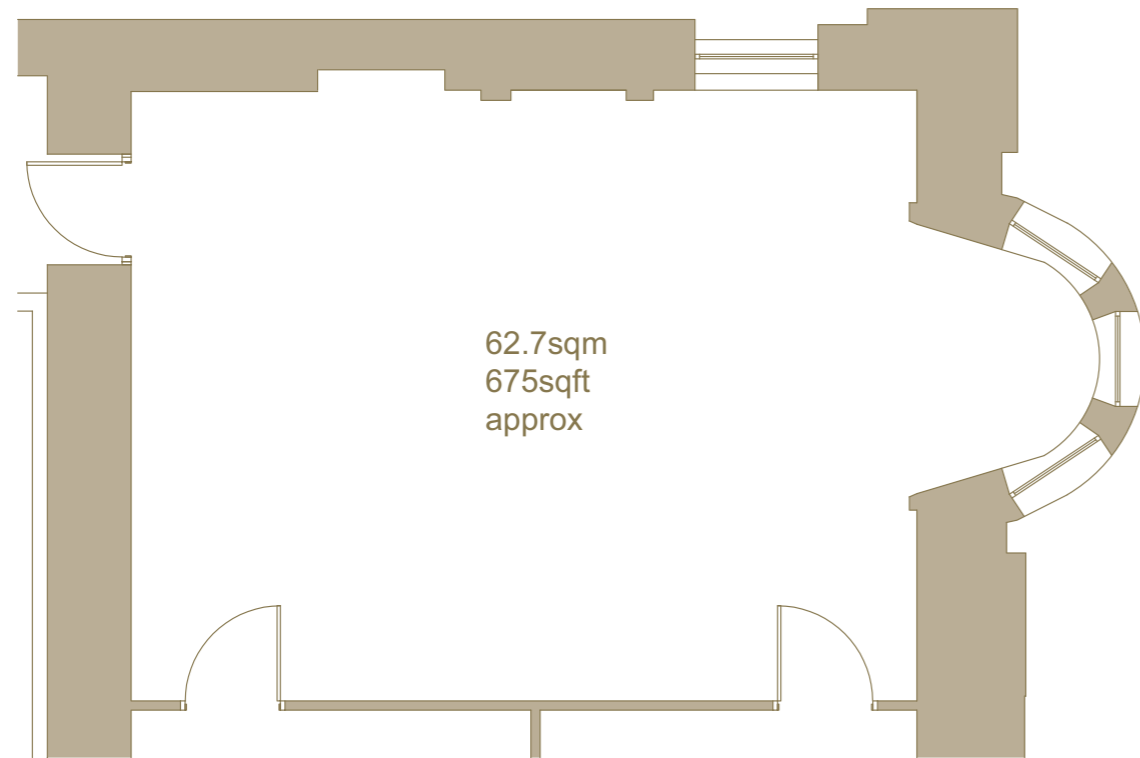
Grand hall

Theatre style – 200
Cabaret (if using the stage area) 120 – tables of 10
Cabaret (if not using the stage) 90 – tables of 10
Drinks/ canape reception - 200
Dinner – 120 on round tables (if using the stage 130)



Directors room

Theatre style –80
Cabaret -50 (tables of 10)
Drinks/canape reception - 100
Dinner – 60 (tables of 10)
Board room - 30



Lord Dean's room

Theatre style –15
Cabaret - n/a
Drinks/canape reception – n/a. Viewing space or cloak room area
Dinner – 10
Board room - 10

